

## General

Productgroup PowerOne  
Mounting type Massive Pressfit Techn  
Material Brass  
Surface tin  
Customs tariff number 85369095  
Country of origin Federal Republic of Germany  
Weight per pieces ~ 0.009340 kg

## Technical data

Terminal / Type Bolt / Metric  
Thread/Diameter x Length 6.000 mm x 10.00 mm  
Torque 3.90 Nm

Socket length x Socket width 9.000 mm x 9.00 mm  
Socket height 10.00 mm  
Socket rounded no  
Height total 23.50 mm  
Height over pcb 20.00 mm  
No. of Pins 16  
Pin length 3.50 mm  
Grid dimension X / Y 2.54 mm / 2.54 mm  
Pin alignment Full plain

## Processing

Press in force 640 N up to 4000 N  
Retention force 60-80 % of press-in force  
Press-in speed 100 mm/min. up to 250 mm/min.  
PCB thickness 1.60 mm up to 3.20 mm  
Notice

## Current carrying capacity

Part (20°C) ~ / (85°C) ~ 160.000 A / 96.000 A

## Usage and storage

Temperature -40°C up to +150°C  
Storage dry environment protected from weather conditions  
Storage conditions at +5°C up to +40°C, 75% RH, non-condensing

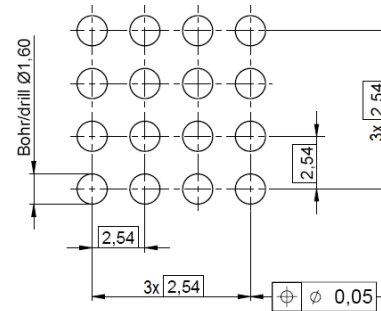
## Accessories

Press in tool

## Co-applicable documents

Powerelement Guidelines [Link to Powerelement Guidelines](#)

## Standard drill pattern



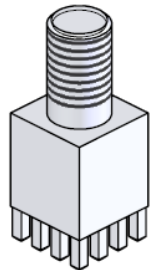
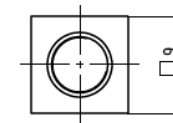
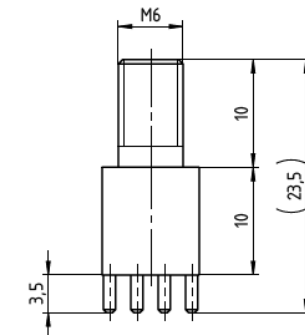
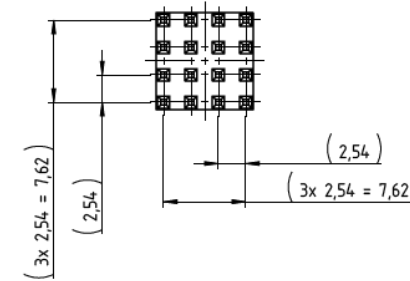
## Drill hole specification for PCB

Drill Ø		drill tool	1,60 mm
		drill hole	1,60 mm - 0,025 mm
Cu		Cu - in Hole	Average 30 µm - 60 µm min. 25 µm, max. 80 µm *
End Ø		HAL	(1,450 mm +/- 0,05 mm)
		chem. surfaces	(1,475 mm +/- 0,05 mm)

Note: For Press-fit Technology drill diameter and copper thickness are fix. End Ø for reference only.

\* single measurement points in microsection

## Dimensions



Würth Elektronik ICS GmbH & Co. KG  
Würthstraße 1 74676 Niedernhall, Germany  
P +49 7940 9810-4444 [powerelement@we-online.de](mailto:powerelement@we-online.de)  
[www.powerelement.com](http://www.powerelement.com)

Observe protective note ISO 16016. Passing on or duplication without previous written agreement forbidden. Violations oblige to compensation. All rights reserved in the event of a patent or utility model protection. Subject to change without notice! Is NOT subject to change service!

General tolerances  
DIN ISO 2768-mH

Projection mode



Revision	Date	All measures in
B	13.06.25	mm

Part no.

**K91590**

Description

**PowerOne Bolt**



REACH  
COMPLIANT



RoHS  
COMPLIANT