

General

Productgroup	PowerOne
Mounting type	Massive Pressfit Techn
Material	Brass
Surface	tin
Customs tariff number	85369095
Country of origin	Federal Republic of Germany
Weight per piecs ~	0.083110 kg

Technical data

Terminal / Type	blind hole / Metric
Thread/Diameter x Length	8.000 mm x 16.00 mm
Torque	9.00 Nm

Socket length x Socket width	18.00 mm x 18.00 mm
Socket height	32.50 mm
Socket rounded	yes
Height total	37.50 mm
Height over pcb	32.50 mm
No. of Pins	25
Pin length	5.00 mm
Grid dimension X / Y	3.81 mm / 3.81 mm
Pin alignment	Full plain

Processing

Press-in force	640 N up to 4000 N
Retention force	60-80 % of press-in force
Press-in speed	100 mm/min. up to 250 mm/min.
PCB thickness	1.60 mm up to 3.20 mm
Notice	

Current carrying capacity

Part (20°C) ~ / (85°C) ~ 250.000 A / 150.000 A

Usage and storage

Temperature	-40 °C up to +150 °C
Storage	dry environment protected from weather conditions
Storage conditions	at +5 °C up to +40 °C, 75% RH, non-condensing

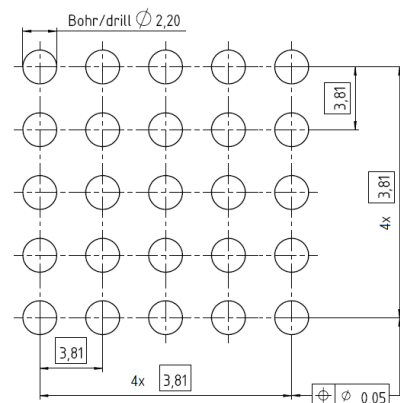
Accessories

Press in tool




Co-applicable documents

Powerelement Guidelines [Link to Powerelement Guidelines](#)

Standard drill pattern



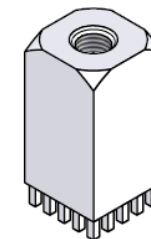
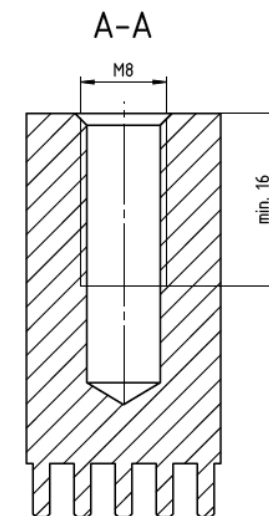
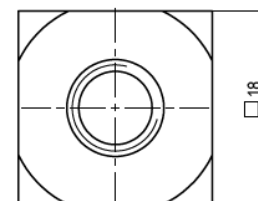
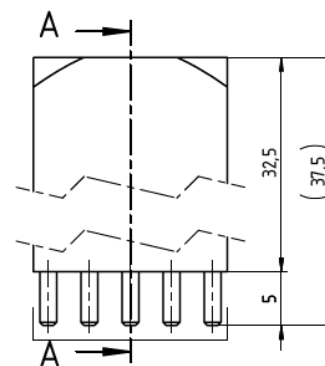
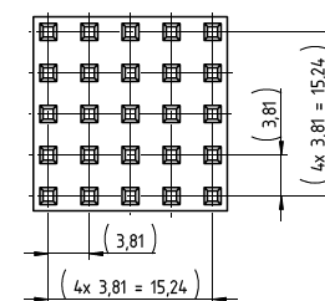
Drill hole specification for PCB

Drill Ø		drill tool	2,20 mm
		drill hole	2,20 mm - 0,025 mm
Cu		Cu – in Hole	Average 30 µm – 60 µm min. 25 µm, max. 80 µm *
End Ø		HAL chem. surfaces	(2,050 mm +/- 0,05 mm) (2,075 mm +/- 0,05 mm)

Note: For Press-fit Technology drill diameter and copper thickness are fix. End Ø for reference only.

* single measurement points in microsection

Dimensions



**WÜRTH
ELEKTRONIK**
MORE THAN
YOU EXPECT

Würth Elektronik ICS GmbH & Co. KG
Würthstraße 1 74676 Niedernhall, Germany
P +49 7940 9810-4444 powerelement@we-online.de
www.powerelement.com

Observe protective note ISO 16016. Passing on or duplication without previous written agreement forbidden. Violations oblige to compensation. All rights reserved in the event of a patent or utility model protection. Subject to change without notice! Is NOT subject to change service!

Generaltolerances

DIN ISO 2768-mH

Projection mode



Revison

B

Date _____

17.06.25

All measures in

mm

Part no.

K92490

Description

PowerOne Bush vertical blind hole



**REACH
COMPLIANT**



RoHS
COMPLIANT