

General

|                       |                             |
|-----------------------|-----------------------------|
| Productgroup          | PowerTwo                    |
| Mounting type         | Pressfit Techn              |
| Material              | Brass                       |
| Surface               | tin                         |
| Customs tariff number | 85369095                    |
| Country of origin     | Federal Republic of Germany |
| Weight per piecs ~    | 0.002220 kg                 |

Technical data

|                          |                              |
|--------------------------|------------------------------|
| Terminal / Type          | Bush through hole / Diameter |
| Thread/Diameter x Length | 5.200 mm x 0.00 mm           |
| Torque                   | 0.00 Nm                      |

|                               |                        |
|-------------------------------|------------------------|
| Pressure plate length x width | 12.000 mm x 0.00 mm    |
| Pressure plate height         | 2.00 mm                |
| Height total                  | 12.40 mm               |
| Pin length                    | 10.40 mm               |
| Pin alignment                 | knurl                  |
| Push in area for diameter     | 6.20 mm                |
| Push in length                | 6.90 mm up to 10.40 mm |

Processing

Notice

Usage and storage

|                    |   |
|--------------------|---|
| Temperature        | -40°C up to +150°C                                |
| Storage            | dry environment protected from weather conditions |
| Storage conditions | at +5°C up to +40°C, 75% RH, non-condensing       |

Accessories

Press in tool

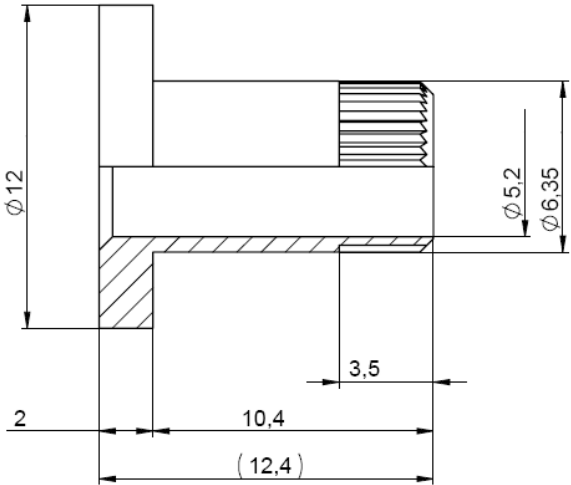
Co-applicable documents

|                         |   |
|-------------------------|---|
| Powerelement Guidelines | <a href="#">Link to Powerelement Guidelines</a> |
|-------------------------|---|

Standard drill pattern

Drill hole specification for PCB

Dimensions



**WÜRTH  
ELEKTRONIK**  
MORE THAN  
YOU EXPECT

Würth Elektronik ICS GmbH & Co. KG  
Würthstraße 1 74676 Niedernhall, Germany  
P +49 7940 9810-4444 [powerelement@we-online.de](mailto:powerelement@we-online.de)  
[www.powerelement.com](http://www.powerelement.com)

Observe protective note ISO 16016. Passing on or duplication without previous written agreement forbidden. Violations oblige to compensation. All rights reserved in the event of a patent or utility model protection. Subject to change without notice! Is NOT subject to change service!

General tolerances  
DIN ISO 2768-mH

Projection mode



| Revision | Date     | All measures in |
|----------|----------|-----------------|
| A        | 23.06.25 | mm              |

Part no.

**K93943**

Description

**PowerTwo Bush Ø5.20 for a 12mm  
Basic Element Ø6.20**



REACH  
COMPLIANT



RoHS  
COMPLIANT