

General

Productgroup	PowerTwo
Mounting type	Massive Pressfit Techn
Material	Brass
Surface	tin
Customs tariff number	85369095
Country of origin	Federal Republic of Germany
Weight per pieces ~	0.005740 kg

Technical data

Terminal / Type	Bush through hole / Diameter
Diameter x Length	7.300 mm x 5.00 mm

Socket length x Socket width	13.000 mm x 13.00 mm
Socket height	5.00 mm
Socket rounded	no
Height total	7.50 mm
Height over pcb	5.00 mm
No. of Pins	16
Pin length	2.50 mm
Grid dimension X / Y	2.85 mm / 2.85 mm
Pin alignment	Circumference with hole

Processing

Press in force	640 N up to 4000 N
Retention force	60-80 % of press-in force
Press-in speed	0 mm/min. up to 0 mm/min.
PCB thickness	1.60 mm up to 3.20 mm
Notice	

Current carrying capacity

Part (20 °C) ~ / (85 °C) ~	240.000 A / 135.000 A
----------------------------	-----------------------

Usage and storage

Temperature	-40 °C up to +150 °C
Storage	dry environment protected from weather conditions
Storage conditions	at +5 °C up to +40 °C, 75% RH, non-condensing

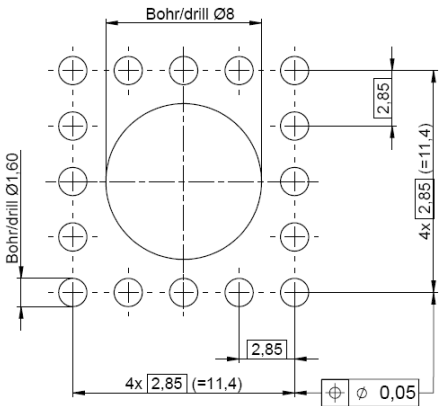
Accessories

Press in tool

Co-applicable documents

Powerelement Guidelines	Link to Powerelement Guidelines
-------------------------	---------------------------------

Standard drill pattern



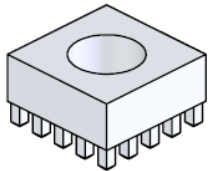
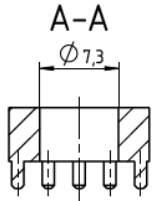
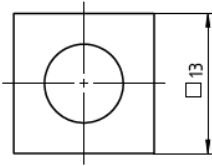
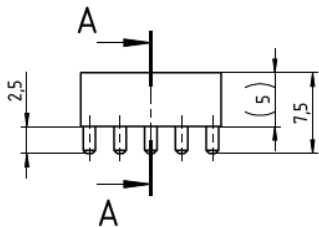
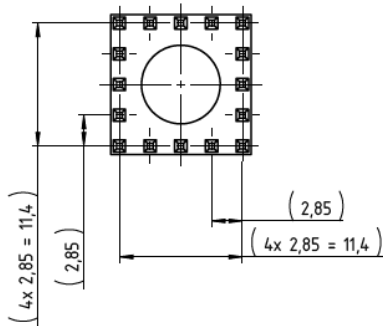
Drill hole specification for PCB

Drill Ø		drill tool	1,60 mm
		drill hole	1,60 mm - 0,025 mm
Cu		Cu - in Hole	Average 30 µm - 60 µm min. 25 µm, max. 80 µm *
End Ø		HAL	(1,450 mm +/- 0,05 mm)
		chem. surfaces	(1,475 mm +/- 0,05 mm)

Note: For Press-fit Technology drill diameter and copper thickness are fix. End Ø for reference only.

* single measurement points in microsection

Dimensions



WÜRTH
ELEKTRONIK
MORE THAN
YOU EXPECT

Würth Elektronik ICS GmbH & Co. KG
Würthstraße 1 74676 Niedernhall, Germany
P +49 7940 9810-4444 powerelement@we-online.de
www.powerelement.com

Observe protective note ISO 16016. Passing on or duplication without previous written agreement forbidden. Violations oblige to compensation. All rights reserved in the event of a patent or utility model protection. Subject to change without notice! Is NOT subject to change service!

General tolerances

DIN ISO 2768-mH

Projection mode



Revision

Date

All measures in

B

01.07.25

mm

Part no.

K96802-Q

Description

**PowerTwo Bush Ø7.30 - 13mm Basic
Element**



REACH
COMPLIANT



RoHS
COMPLIANT