

General

Productgroup	LF PowerTwo
Mounting type	Pressfit Techn
Material	Brass lead-free (max. 0.1% Pb)
Surface	tin
Customs tariff number	85369095
Country of origin	Federal Republic of Germany
Weight per piecs ~	0.003600 kg

Technical data

Terminal / Type	Bush through hole / Diameter
Thread/Diameter x Length	5.200 mm x 0.00 mm
Torque	0.00 Nm

Pressure plate length x width	13.000 mm x 13.00 mm
Pressure plate height	2.00 mm
Height total	8.40 mm
Pin length	6.40 mm
Pin alignment	knurl
Push in area for diameter	7.30 mm
Push in length	3.50 mm up to 6.40 mm

Processing

Notice

Usage and storage

Temperature	-40°C up to +150°C
Storage	dry environment protected from weather conditions
Storage conditions	at +5°C up to +40°C, 75% RH, non-condensing

Accessories

Press in tool

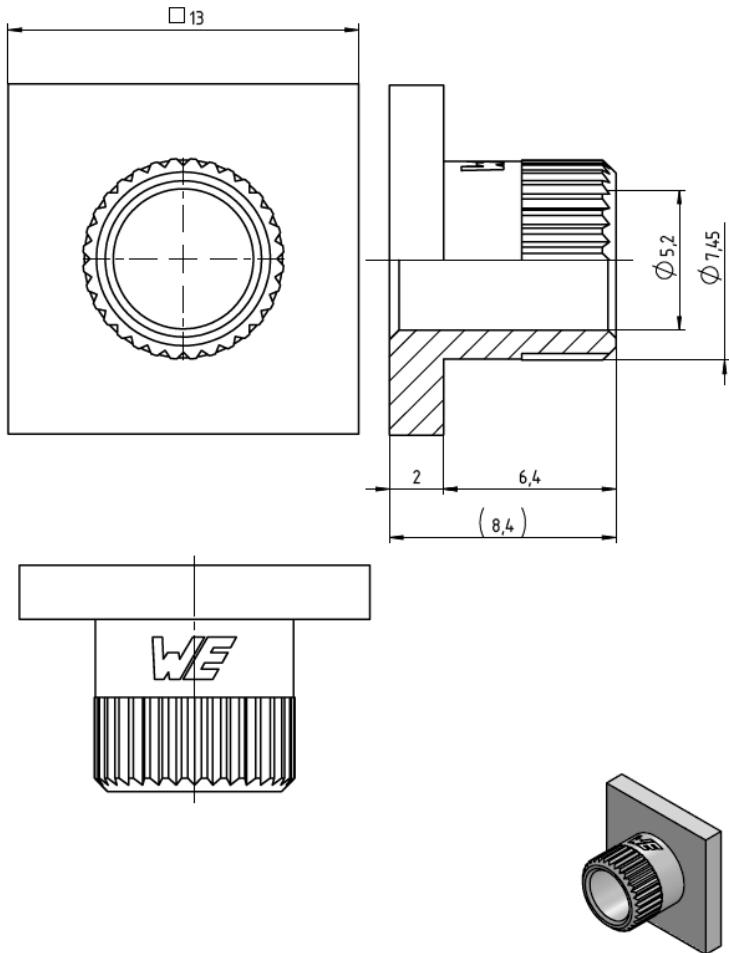
Co-applicable documents

Powerelement Guidelines	Link to Powerelement Guidelines
-------------------------	---

Standard drill pattern

Drill hole specification for PCB

Dimensions



**WÜRTH
ELEKTRONIK**
MORE THAN
YOU EXPECT

Würth Elektronik ICS GmbH & Co. KG
Würthstraße 1 74676 Niedernhall, Germany
P +49 7940 9810-4444 lf-powerelement@we-online.de
www.lf-powerelements.com

Observe protective note ISO 16016. Passing on or duplication without previous written agreement forbidden. Violations oblige to compensation. All rights reserved in the event of a patent or utility model protection. Subject to change without notice! Is NOT subject to change service!

General tolerances

DIN ISO 2768-mH

Projection mode



Revision

Date

All measures in

B

12.08.25

mm

Part no.

LF990452

Description

**LF-PowerTwo Bush Ø5.2 for a 13mm
Basic Element Ø7.30**



**RoHS
COMPLIANT**
LEAD-FREE
Pb < 0,1 %