

### General

Productgroup	LF PowerPlus
Mounting type	Massive Pressfit Techn
Material	Lead-free Brass
Surface	tin
Customs tariff number	85369095
Country of origin	Federal Republic of Germany
Weight per piecs ~	0.004710 kg

### Technical data

Terminal / Type	Bolt / Metric
Thread/Diameter x Length	5.000 mm x 10.30 mm
Torque	3.90 Nm
Socket length x Socket width	10.200 mm x 10.20 mm
Socket height	9.00 mm
Height total	27.30 mm
Height over pcb	22.30 mm
No. of Pins	8
Pin length	5.00 mm
Grid dimension X / Y	3.00 mm / 3.00 mm
Pin alignment	Circumference

### Processing

Press in force	480 N up to 2000 N
Retention force	60-80 % of press-in force
Press-in speed	100 mm/min. up to 250 mm/min.
PCB thickness	1.60 mm up to 3.20 mm
Notice	

### Current carrying capacity

Part (20°C) ~ / (85°C) ~	190.000 A / 110.000 A
--------------------------	-----------------------

### Usage and storage

Temperature	-40°C up to +150°C
Storage	dry environment protected from weather conditions
Storage conditions	at +5°C up to +40°C, 75% RH, non-condensing

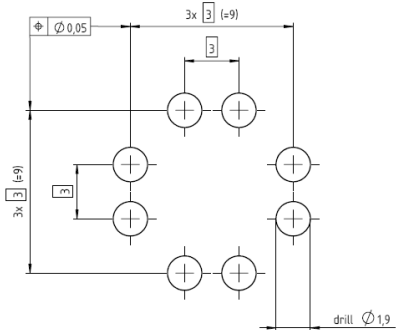
### Accessories

Press in tool	Press-Fit tool bush, for PowerPlus 2.0 bolt M5
---------------	--


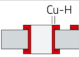
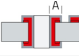
### Co-applicable documents

Powerelement Guidelines	Link to Powerelement Guidelines
-------------------------	---------------------------------

### Standard drill pattern

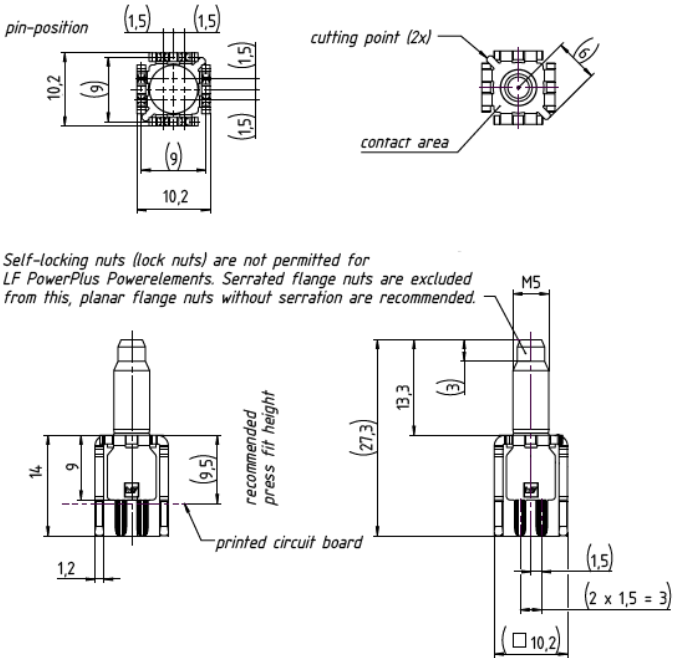


### Drill hole specification for PCB

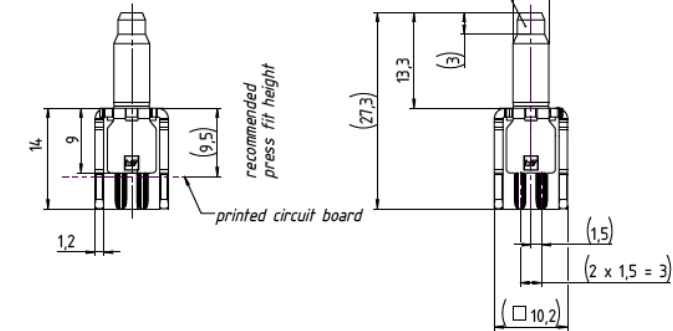
Drill Ø		drill tool	1,90 mm
		drill hole	1,90 mm – 0,025 mm
Cu		Cu – in Hole	Average 30 µm – 60 µm min. 25 µm, max. 80 µm *
End Ø		HAL chem. surfaces	(1,750 mm +/- 0,05 mm) (1,775 mm +/- 0,05 mm)
<b>Note:</b> For Press-fit Technology drill diameter and copper thickness are fix. End Ø for reference only.			

\* single measurement points in microsection

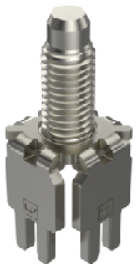
### Dimensions



Self-locking nuts (lock nuts) are not permitted for LF PowerPlus Powerelements. Serrated flange nuts are excluded from this, planar flange nuts without serration are recommended.



### Press-fit-tool information




**WÜRTH  
ELEKTRONIK**  
MORE THAN  
YOU EXPECT

Würth Elektronik ICS GmbH & Co. KG  
Würthstraße 1 74676 Niedernhall, Germany  
P +49 7940 9810-4444 lf-powerelement@we-online.de  
www.lf-powerelements.com

Observe protective note ISO 16016. Passing on or duplication without previous written agreement forbidden. Violations oblige to compensation. All rights reserved in the event of a patent or utility model protection. Subject to change without notice! Is NOT subject to change service!

General tolerances  
DIN ISO 2768-mH

Projection mode  


Revision	Date	All measures in
B	25.06.25	mm

Part no.

**S900551**

Description

**LF PowerPlus 2.0 Bolt**

